



# Elizabeth Gregory Home CONNECTIONS

Spring 2023

Dear Friends,

We hope this newsletter finds you well, enjoying more sunny days, and staying engaged with your community. Your community here at Elizabeth Gregory Home, both our staff team and our guests, would like to thank you for keeping us top of mind for your generous gifts of time and treasure both in the past and in the future.



We were overjoyed to welcome over 260 people at our [Spring Luncheon](#) who helped us surpass our goal by raising over a quarter of a million dollars!

THANK YOU ALL SO MUCH!

If you were unable to join us at the luncheon, you have another opportunity to help during [Give Big](#), *Washington's online days of giving*. Gifts of ANY size are welcomed and appreciated.

Spring is upon us here in the Pacific Northwest and ideas and improvements are popping up like the blooms and blossoms of the season here at EGH.

We are currently working on repurposing our old kitchen/dining room/pantry into a new multipurpose Empowerment Space.

Thanks to generous funding from University Rotary and the John G. Lewis Social Justice Endowment at University Congregational United Church of Christ, we have installed new flooring and will be painting, getting new shelving to support a permanent clothing giveaway area, an art area, and spaces for support groups, workshops, and movement



activities. We recently hosted a Personal Safety Class in the new space, so it is already being put to great use!

You will find lots of great updates in this Spring Newsletter: we're looking toward the future by embarking on a Strategic Planning process, we're welcoming voices of those with lived experience, we're thankful to our volunteers, and we hope you join us in June to walk in the Seattle PRIDE Parade!

I wish you all a lovely Spring season, thank you for your kindness and generosity, and please read on for more news about EGH.

With gratitude,



Ally Baehr  
Executive Director



## Baking with a Shot of Love

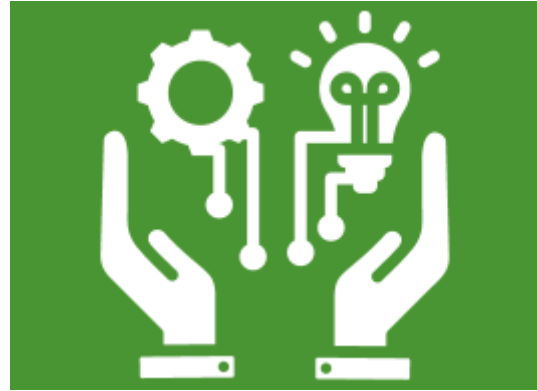
When Rhonda found herself homeless, she didn't think she had a shot at finding a home and a job she loved. Through EGH's Transitional Housing Program, she was connected with housing, training and a future. [Watch Video](#)

## Creating a 3 Year Plan

A strategic plan is a roadmap to where an organization wants to be in the future. At EGH, we're starting the strategic planning process now for a 3-year plan and will need your input!

[Read More](#)

---



## Valued Voices

Incorporating voices of those who have experienced homelessness into our work and decision-making has been a priority at EGH. Learn how we've brought lived-experience to roles from Day Center Assistant to Board Member. [Keep Reading](#)

---

## Supporter Spotlight

Roger Morris became involved with Elizabeth Gregory Home over a decade ago. Read how he's invested in our work and learn how you, too, could become involved.

[Continue reading](#)

---





**GIVE  BIG**  
POWERED BY 501 COMMONS **MAY 2-3**

Mark your calendar for GiveBIG, the annual Days of Giving!  
Early giving begins Tuesday April 18th. [Visit here](#) to learn more.

## Walk with EGH in the Seattle PRIDE Parade!

Donors, volunteers, clients, staff, and all friends of EGH are welcome to walk with us in the PRIDE Parade on June 25th! Participants will receive a special EGH T-shirt. Last year was a BLAST - we hope you can join us!

[Learn more and register here](#)



**DONATE**